

Article

Instrumentation and Future Missions in the Upcoming Era of X-Ray Polarimetry

Sergio Fabiani [†] 

INAF-IAPS; sergio.fabiani@iaps.inaf.it; Tel.: +39-06-4993-4450

[†] Current address: via del Fosso del Cavaliere 100, 00133 Rome, Italy

Received: 31 January 2018; Accepted: 12 April 2018; Published: date

Abstract: The maturity of current detectors based on technologies that range from solid state to gases renewed the interest for X-ray polarimetry, raising the enthusiasm of a wide scientific community to improve the performance of polarimeters as well as to produce more detailed theoretical predictions. We will introduce the basic concepts about measuring the polarization of photons, especially in the X-rays, and we will review the current state of the art of polarimeters in a wide energy range from soft to hard X-rays, from solar flares to distant astrophysical sources. We will introduce relevant examples of polarimeters developed from the recent past up to the panorama of upcoming space missions to show how the recent development of the technology is allowing reopening the observational window of X-ray polarimetry.

Keywords: X-ray polarimetry; instrumentation; polarization

1. Introduction

X-ray polarimetry still remains nowadays a vastly unexplored field in astronomy, but the recent development of new technologies will allow us in a near future to deeply observe many astrophysical sources with measurements with high significance level. Despite imaging, spectroscopy and timing being well-developed techniques also in X-ray astronomy, polarimetry remains an observational tool that is less advanced with respect to the other wavelengths. However, many emission processes and physical interactions involve the production of polarized photons also in the X-rays.

In this paper, the science goals of X-ray polarimetry are briefly introduced in Section 2. The basic concepts of polarimetry at high energy and the typical relevant detector systematics are discussed in Sections 3 and 4, respectively. In Section 5, the polarimetry techniques employed in X-ray astronomy are discussed in detail as well as the related instrumentation and some relevant polarimetric missions that have recently launched, are scheduled for launch or in assessment phase.

2. Science Goals of X-Ray Polarimetry

Many physical processes are responsible for the polarization of X-rays; therefore, polarimetry is a powerful tool to investigate the physics and the geometry of different families of astrophysical sources. Polarimetry adds the degree and the angle of polarization to the space of observable parameters allowing one to add information useful to remove degeneracies in source models and to distinguish among different types of these.

The processes of particle acceleration are among the most relevant phenomena responsible for the emission of polarized X-rays. The magnetic field plays a crucial role in the particle acceleration, depending on its turbulence level and reconnection events. The knowledge of the magnetic field's geometry and strength is useful to place constraints on the parameters of the models of acceleration mechanism. Synchrotron radiation [1] is the emission process fed by particle acceleration in astrophysics sources like Pulsar Wind Nebulae (PWNe) that originate from the interaction of the

pulsar magnetic field and the relativistic wind with the surrounding Supernova Remnant (SNR) [2,3]. They are efficient particle accelerators [4,5] and emit synchrotron radiation in the X-ray band. The Crab Nebula is the only astronomical source with a high confidence level X-ray polarimetric measurement of $19.2 \pm 1.0\%$ [6]. Another class of particle accelerators are Young Supernova Remnants (SNRs) [7–9] in which accelerated electrons radiate via synchrotron radiation along shock fronts, producing emitting filaments. Particle acceleration is responsible also for feeding in the physics of jets (both in galactic and extragalactic sources). Among Active Galactic Nuclei (AGN), blazars are powered by an efficient accretion onto a supermassive Black Hole (BH) of highly energized and magnetized plasma [10]. The lower energy peak in their Spectral Energy Distribution (SED) is due to synchrotron radiation and can reside in the X-ray, the optical or the IR energy bands. The physics of jets and their relationship with the disc and the corona comprise a key topic for polarimetry when studying galactic sources like micro-quasars [11,12]. Scenarios with Comptonization of thermal/quasi-thermal disc photons in a hot electron-positron corona compete with synchrotron models of a relativistic jet.

The ejection of a highly-collimated high-speed jets of plasma should be the cause responsible for the emission of Gamma Ray Bursts (GRB). The mechanisms of the production of the prompt radiation, the energetics of explosions and the role of magnetic fields remain largely unknown. Particle acceleration is also responsible for the emission of solar flares originating from magnetic reconnection. Accelerated electrons emit via non-thermal bremsstrahlung [13] and their emission can be highly polarized [14].

Another field of investigation for X-ray polarimetry is comprised of sources, the emission of which originates in strong magnetic fields that channel matter accretion along field lines, creating aspherical X-ray emission and scattering geometries. X-ray polarimetry is able to probe the origin and structure of the emission from magnetized White Dwarfs (WD) [15,16] and Neutron Stars (NS) in binary systems. In accreting X-ray pulsars, plasma coupling with a strong magnetic field (10^{12-13} G) is responsible for the high polarization of X-rays. The emission from compact sources can be polarized due to the different opacity of the plasma to the different states of the polarization [17–19]. Polarimetry in X-rays is also a valuable tool to study vacuum polarization and birefringence through extreme magnetic fields [20–22]. In accretion-powered millisecond pulsars (AMs) [23–25], the hard power-law component in the energy spectra is likely due to Comptonization in a radiative shock surface of the thermal emission from a hot spot on the neutron star surface. The scattered radiation should be linearly polarized with the polarization degree and angle varying with the phase [26]. X-ray polarimetry offers also the possibility to study rotation-powered pulsars [27], the X-ray emission of which is expected to be highly polarized, as well as to study ultra-magnetized neutron stars, such as magnetars [28–30].

Scattering in aspherical geometries is responsible for polarizing radiation. This is the case of accreting plasmas in disks, blobs and columns [17,31,32]. This process is responsible, for example for the polarization of the emission in binary systems (XRBs) and AGNs [33]. Comptonization arises from accretion-disk-fed binary sources in which disk photons are Compton scattered by a hot corona [34,35]. Polarimetry can put constraints on the corona and on the inclination angle of the disk [36]. Moreover, also the fraction of the primary emission reflected by the accretion disk itself (Compton Reflection component (CR)) is expected to be highly polarized depending mainly on the inclination angle of the disk [37]. The innermost regions of radio-quiet AGN can be seen as scaled-up versions of galactic black hole systems with the hard Comptonization component produced from the thermal UV/soft-X-ray disk component. Moreover, in addition to the accretion disk, other reflecting regions are present, such as the dusty torus. Reflection is also the process responsible for the emission from molecular clouds as for example Sgr B2, which is probably reflecting the past emission from the central black hole source of our galaxy [38–41], which should therefore have undergone a phase of strong activity about three hundred years ago.

Different fields of fundamental physics can be investigated by means of X-ray polarimetry. Light bending around BHs is a general relativity effect responsible for the rotation of the polarization vector, which is particularly relevant in strong fields [42–46]. Furthermore, new physics, such as Quantum Gravity (QG) [47] and the search for axion-like particles [48] would be possible.

3. Polarimetry Basics

A polarimeter is a detector that analyses different angular directions and detects photons with respect to these directions. The current technology available for X-ray polarimetry allows to deal with the linear polarization only. If the radiation is not polarized every angular direction has the same probability, thus the number of photons detected, as a function of the angular directions, is the same and the detector response is *flat* (see left panel of Figure 1). If the radiation is polarized one angular direction will be more probable and a \cos^2 modulation arises (see right panel of Figure 1). The \cos^2 modulation depends on the dipole interaction between the photon and the interacting electron of an atom in the sensitive volume of the polarimeter. The modulation function can be defined as in Equation (1), where A is the flat term and B is the modulated term:

$$N(\phi) = A_P + B_P \cos^2(\phi - \phi_0) \quad (1)$$

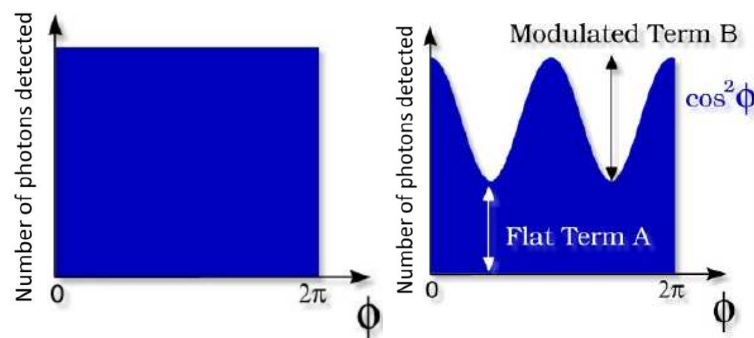


Figure 1. On the left panel: General view of the response of a polarimeter. The detector response to unpolarised radiation is *flat* since all the angular directions have the same probability. On the right panel: The detector response to the polarized radiation is modulated since one angular direction is more probable.

The modulated fraction of the detector response is given by the modulation factor μ that is defined for 100% polarized radiation:

$$\mu = \frac{N_{100\%}^{\max} - N_{100\%}^{\min}}{N_{100\%}^{\max} + N_{100\%}^{\min}} = \frac{B_{100\%}}{2A_{100\%} + B_{100\%}} \quad (2)$$

where $N_{100\%}^{\max}$ and $N_{100\%}^{\min}$ are the maximum and minimum number of photons detected in the angular bins of the modulation histogram for 100% polarized radiation. It is a normalization term needed to derive the polarization degree P for radiation with an unknown polarization:

$$P = \frac{1}{\mu} \frac{B_P}{2A_P + B_P} \quad (3)$$

The performance of different polarimeters can be compared by means of the Minimum Detectable Polarization (MDP), which is defined as the minimum polarization that can be detected at a confidence level of 99% [49,50]:

$$\text{MDP}(99\%) = \frac{4.29}{\mu R} \sqrt{\frac{R+B}{T}} \quad (4)$$

In this equation R is the rate of the source, B is the background and T is the observation time. A signal, with a modulation corresponding to a polarization lower than the MDP, is compatible with a statistical fluctuation and therefore, no positive detection of a polarization can be claimed.

With some trigonometry it is possible to find a more convenient formula to fit the modulation curve on the histogram of the angular directions with respect to Equation (1). It is given by [51]:

$$N(\phi) = N_0 \cdot (1 + a \cos(2(\phi - \phi_0))) \quad (5)$$

where the modulation factor is directly derived. As in Equation (3) the polarization degree is given by:

$$P = \frac{a}{\mu} \quad (6)$$

The quality factor Q is a parameter useful to compare the sensitivity of different polarimeters. It is derived from the MDP (see Equation (4)) by assuming a source dominated observation ($B \simeq 0$):

$$\text{MDP}(99\%) \propto \frac{1}{\mu\sqrt{\epsilon}} \frac{1}{\sqrt{F}} = \frac{1}{Q} \frac{1}{\sqrt{F}} \quad (7)$$

where ϵ is the detector quantum efficiency and F is the source flux. The quality factor is:

$$Q = \mu\sqrt{\epsilon} \quad (8)$$

Obviously, the formalism introduced so far is compatible with Stokes parameters, which are typically used for those wavelengths for which the intensity of the radiation is used instead of single photon counting. A comprehensive treatment of the relation between the typical high energy formalism and the Stokes parameters is given in [50,51].

4. Polarimeters and Systematics

The detector geometry is crucial for polarimetry, more than for other observational techniques. A not well conceived geometry can originate large systematics, that need to be controlled. For example, a hexagonal geometry of the sensitive elements (pixels or scintillating bars) is preferable with respect to a squared geometry, due to the $\pi/2$ spurious modulation introduced. The rotation of the polarimeter, with respect to the line of sight, may be used to control this effect. However, to rotate the detector is not always possible in the mission design. The scattering and photoelectric polarimeters, the signals of which depend on the azimuthal response, show a spurious modulation if the incoming beam of radiation is inclined with respect to the detector axis (the azimuthal symmetry is broken). This effect is more relevant for larger inclinations and it is not negligible for an inclination of some degrees. Typically, a correction is applied by comparing the off-axis modulation curve with the on-axis one [52]. However, a theoretical treatment of this effect, with the correction to apply, is described in [53].

5. Polarimeter Techniques and Instrumentation

In the X-rays it is possible to identify three different energy bands in which different physical processes can be exploited to perform polarimetry (see Table 1). The diffraction on crystals, especially in the past, and currently on multilayer mirrors, are used below 1 keV. At higher energies, up to some

tens of keV, the photoelectric effect is exploited nowadays, while Thomson scattering was previously used. The Compton scattering instead is exploited in the 100 keV energy range.

Table 1. Polarimetry techniques and scientific goals for different energy bands.

		< 1 keV	1–10 keV	> 10 keV
Polarimetry techniques		•Diffraction	•Photoelectric effect, •Thomson scattering (from few keV)	•Photoelectric effect (up to tens of keV), •Thomson scattering (up to tens of keV), •Compton scattering (from few tens of keV)
Scientific goal	Sources			
Acceleration phenomena	PWN	yes (but absorption)	yes	yes
	SNR	no	yes	yes
	Jet (microquasars)	yes (but absorption)	yes	yes
	Jet (blazars)	yes	yes	yes
	Solar flares	difficult (but thermal & lines)	difficult (but thermal & lines)	yes
Emission in strong magnetic field	WD	yes (but absorption)	yes	difficult
	AMs	no	yes	yes
	X-ray pulsator	difficult	yes (no cyclotron?)	yes
	Magnetar	yes (better)	yes	no
Scattering in aspherical geometries	Corona in XRB and AGN	difficult	yes	yes (difficult)
	X-ray reflection nebulae	no	yes (long exposure)	yes
Fundamental physics	QED (magnetar)	yes (better)	yes	no
	GR (BH)	no	yes	no
	QG (blazars)	difficult	yes	yes
	Axions (blazars, clusters)	yes?	yes	difficult

5.1. Bragg Diffraction Polarimeters

In a crystal, with lattice spacing d , diffraction occurs for an energy E at an angle θ , if the following equation is verified:

$$E = \frac{nhc}{2d \sin(\theta)} \quad (9)$$

where n is the diffraction order, h is the Planck constant and c is the speed of light. This formula has to be verified in a very narrow energy band (few eV), thus mosaic crystals or bent crystals assemblies are typically used to increase the angle of acceptance and, therefore, the energy band. The incoming radiation beam can be thought as comprising two components: the π component, which lies parallel to the incidence plane, and the σ component, which is perpendicular to this plane.

If the diffraction angle is 45° only the σ component survives and the out-coming beam is 100% polarized, orthogonally with respect to the incidence plane, as shown in Figure 2. By rotating the crystal around the beam axis, the flux of the out-coming radiation is modulated, since the polarized component is alternatively the σ and π component (the modulation period is twice the rotation period). However, the Bragg formula (see Equation (9)) has to be verified to diffract the polarized component. Therefore, the spacing d is chosen such that the incidence angle θ , for the specific energy, is close as possible to 45° . This technique is extremely inefficient to measure the polarization of

continuous energy spectra, but allows to analyse photons at energies starting from less than 1 keV. A detailed description of the Bragg diffraction on crystals, for polarimetry, is given in [54]. Currently, a large technological effort is focused in developing multilayer mirrors to exploit the Bragg diffraction. Multilayer mirrors allow, with respect to crystals: (1) to choose, to some extent, the energy of interest; (2) to shape the mirror as a paraboloid and to focus the incident beam, thus to maximize the signal to noise ratio.

In Tab. 2 relevant Bragg diffraction polarimeters and missions planned are listed.

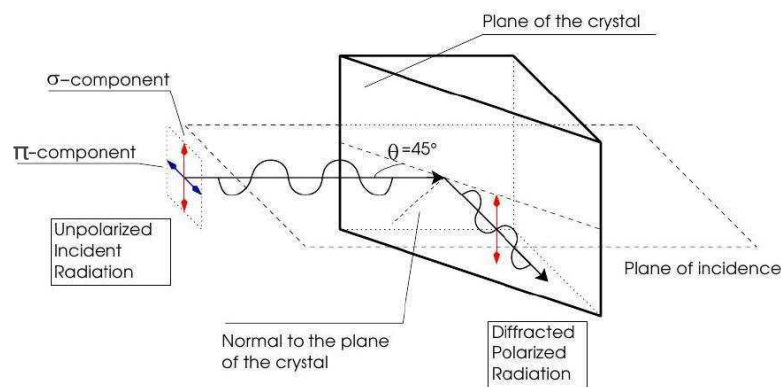


Figure 2. Schematic representation of Bragg diffraction at 45° on a crystal. The radiation component, which is polarized perpendicularly with respect to the plane of incidence, is efficiently diffracted, while the radiation component that have a parallel polarization with respect to this plane is absorbed by the crystal.

5.1.1. SOLPEX: SOLar Spectroscopy and Polarimetry EXperiments for Solar Flares

Hard X-rays are well suited to perform polarimetry of solar flares, since at energy larger than about 15–20 keV, a highly polarized component of non-thermal Bremsstrahlung [14] is dominant in the energy spectra, with respect to the thermal one [55]. Moreover, at energy lower than 10 keV, there is a large component of emission lines from hot highly ionized elements [56]. However, the non-thermal component can be large even at low energy in the early impulsive phase of flares.

The low energy band is the target of B-POL (Bragg POLarimeter) in the SOLPEX experiment. It will be mounted on the KORTES platform, on board the Nauka Russian module, on the International Space Station (ISS) [57]. The launch of the KORTES platform to the ISS is expected in the period 2022–2023 [58]. B-POL comprises a Si(111) bent crystal (85.5 mm \times 31 mm) at the Brewster angle of $\sim 45^\circ$. The bending radius of 610.0 mm allows a spectral range of 3.940–4.505 Å. The readout detector is a Charge Coupled Device (CCD). The polarimeter system rotates at 1 rev./s to ensure the measurement of the polarization. The ISS environment allows an easy access and maintenance and essentially no power limitation. However, the inclined orbit causes an eclipse every 90 min. Moreover, due to the ISS motion, only few minutes of uninterrupted observation per orbit are possible.

5.1.2. LAMP: Lightweight Asymmetry and Magnetism Probe

Multilayer mirrors were proposed in the early 2000s for the PLEXAS polarimeter [59] to perform polarimetry by exploiting the Bragg diffraction and focusing soft X-rays (250 eV). Recently, this idea had a new boost with the project of the LAMP polarimeter. It is a micro-satellite mission concept for astronomical X-ray polarimetry, which is currently under an early assessment phase in China. The scientific goals comprise the study of the thermal radiation from the surface of pulsars and the synchrotron radiation produced by relativistic jets in blazars. X-ray photons at 250 eV are focused by a segmented paraboloidal multilayer mirror with a collecting area of about 1300 cm². A position sensitive detector is placed at the focal plane [60]. The reflection angle varies along the

mirror and the thickness changes to match the Bragg law for the 250 eV photons anywhere on the mirror. The focal plane detectors, that match the LAMP goals, are both a CCD or the Gas Pixel Detector (GPD) [61,62] used as a simple imaging detector. Because of the low-cost mission profile based on a micro-satellite, the GPD is preferable with respect to the CCD.

5.1.3. REDSoX: Rocket Experiment Demonstration of a Soft X-Ray Polarimeter

The REDSoX polarimeter [63,64] is a demonstration experiment aimed to perform polarimetry by means of multilayer laterally graded mirrors [65]. The scientific goals of the REDSoX polarimeter comprise the measurement of the polarization of pulsars, AGNs, jets in binary systems and discs. The X-ray polarization is measured by means of a chain which comprises critical angle transmission (CATs) gratings that disperses the radiation by matching the Bragg condition at the first order of laterally graded multilayer mirrors (LGMLs) that illuminate CCD detectors.

Table 2. Bragg diffraction polarimeter experiments and missions planned.

Name	Time Schedule	Focal Plane	F.O.V	En. Range	Science Obj.	References
SOLPEX	launch 2022–2023	no	2×2 arcmin ²	3.940–4.505 Å	solar flares	[57,58]
LAMP	assessment	yes	few arcmin	250 eV	pulsars thermal emission, jet blazars	[60]
REDSoX	development	yes	pointing jitter $\lesssim 15$ arcsec	0.2–0.8 keV	AGNs and binaries jets and discs, Isolated NSs and pulsars	[63–65]

5.2. Photoelectric Polarimeters

When a photon is absorbed via photoelectric effect by an atom, a photoelectron is emitted. The direction of emission depends on the differential cross-section defined as [66]:

$$\frac{d\sigma_{ph}}{d\Omega} = \frac{\sigma_{ph}^{tot}}{4\pi} \left[1 + \frac{b}{2} \left(\frac{3 \sin^2(\theta) \cos^2(\phi)}{(1 + \beta \cos(\theta))^4} - 1 \right) \right] \quad (10)$$

where θ and ϕ are the photoelectron polar and azimuthal angles of emission, respectively (see Figure 3). The electric vector of the absorbed photon defines the $\phi = 0$ angular direction in Figure 3. The photoelectron is emitted with a higher probability parallel to this direction. The parameter b is called orbital asymmetry factor and it is equal to 2 for s orbitals, while it is less than 2 for the other cases. In the first case, the constant term vanishes and only the $\cos^2(\phi)$ modulated term remains. Therefore, the photo-absorption due to spherical orbitals, is a perfect polarization analyser. A gas detector is suitable to perform polarimetry by exploiting the photoelectric effect, because the photoelectron track length in gas is in the range of millimetres for absorbed photons of energy from 1 keV up to some tens of keV.

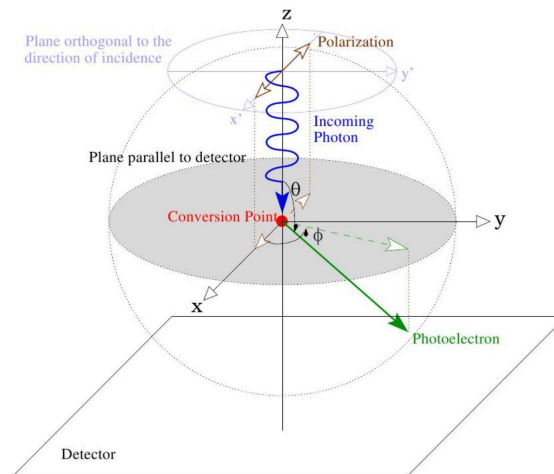


Figure 3. Scheme of the photoelectric effect absorption. See Equation (10).

Two different technologies are available to perform polarimetry by exploiting the photoelectric effect. The schematic views of these two kinds of detectors are shown in Figures 4 and 5. They are the Gas Pixel Detector (GPD) [61,62] (developed in Italy by INFN and INAF-IAPS research institutes) and the Time Projection Chamber (TPC) [67] (developed in USA by the GSFC). In both cases, the X-ray photon is absorbed in a gas cell and the ionization charges, produced by the photoelectron, are drifted and multiplied by a Gas Electron Multiplier (GEM) and, eventually, read out by an anodic plane.

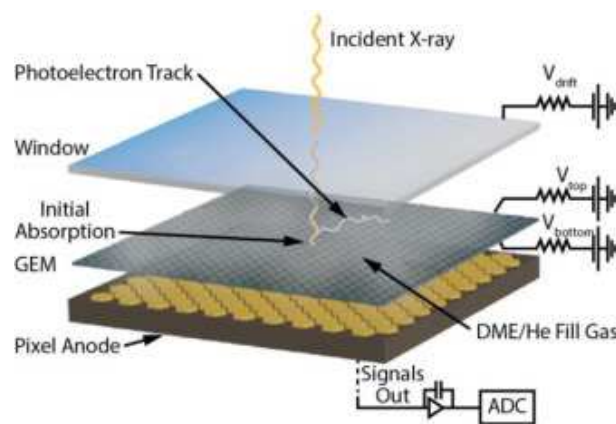


Figure 4. The GPD polarimeter concept design.

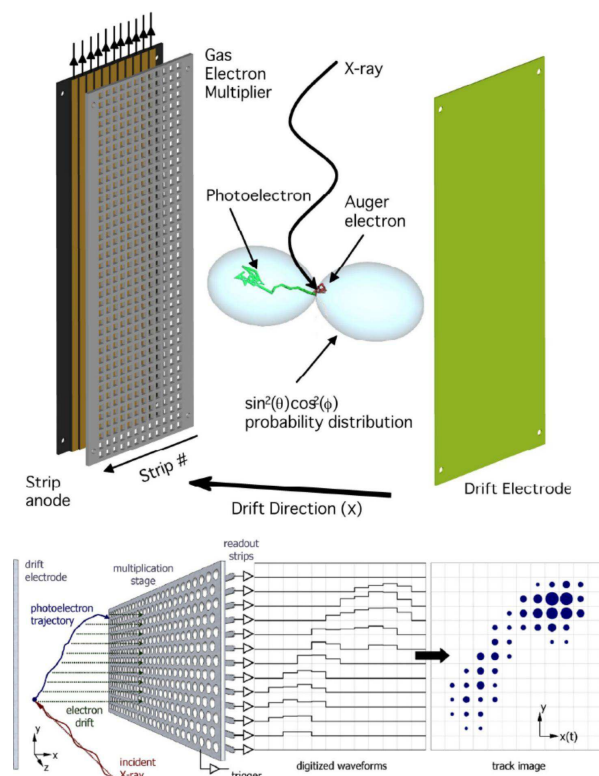


Figure 5. The TPC polarimeter concept design.

In the GPD the readout plane is a finely subdivided pixel plane, while in the TPC the readout is performed by means of a strip detector. The other relevant difference between these two polarimeters is given by the orientation of the readout plane with respect to the optical axis. In the GPD the incoming photon direction is perpendicular to the readout plane. Therefore, the readout plane is also parallel to the plane of maximum probability of emission of the photoelectrons ($\theta = \pi/2$ in Equation (10)). This geometry allows to make the image of the tracks along their extension and the ionization charges are affected by the same drift field (given the angle θ) for all the ϕ angles from 0 to 2π .

Differently with respect to the GPD, in the TPC the incoming photon direction is parallel to the readout plane. The ionization charges are drifted orthogonally with respect to the optical axis and the detector quantum efficiency can be increased simply by making a deeper gas cell. Moreover, its length does not affect the charge diffusion along the drift. On the contrary, in the GPD, a thicker gas cell implies a larger diffusion and ionization charge dispersion. However, the TPC geometry is intrinsically asymmetric, since for $\theta \sim \pi/2$ (see Equation (10)), photoelectrons are emitted towards the GEM or in the opposite direction. This asymmetry produces systematics which can be mitigated by the rotation of the polarimeter and by a careful timing analysis on the track readout signals (ionization charges produced closer to the GEM give rise to a signal earlier with respect to the other ones as shown in the bottom panel of Figure 5).

The TPC design was proposed on board GEMS [68–72] and PRAXyS [73–76] mission proposals. The GPD design was proposed in the past in many mission proposals (the most relevant are: IXO [77], NHXM [78], POLARIX [79], ESA Medium class mission XIPE [80]) and currently in the

IXPE mission [81,82] approved by NASA and eXTP mission [83] selected as *background mission*¹ by the Chinese Academy of Sciences.

In Tab. 3 the missions scheduled for a launch which host photoelectric X-ray polarimeters are listed.

5.2.1. IXPE: Imaging X-Ray Photoelectric Polarimeter

The GPD is currently the polarimeter on board the IXPE mission, selected by NASA in the framework of the Explorer missions, which is scheduled for the launch in 2021 [81,82]. IXPE is a joint mission between NASA and ASI. The focal plane comprises three GPD polarimeters provided by the Italian collaboration. The GPD on board IXPE allows to perform imaging spectro-polarimetry due to the capability to measure the interaction point, the ionization charge (energy resolution $\frac{\Delta E_{FWHM}}{E} \simeq 16\%$ at 5.9 keV) and the direction of emission of the photoelectrons (ϕ azimuthal angles). This is obtained by means of the analysis of the statistical momenta of the ionization charge distribution of each track projected onto the readout plane. A detailed description of the current state of development of the GPD for the IXPE mission is given by [84–86]. The three GPDs on board IXPE are sensitive in the 2–10 keV energy range and they are filled with a gas mixture which comprises 20% He and 80% Dimethyl Ether (DME) at 1 bar of pressure in a 1 cm thick gas cell. The active area is $15 \times 15 \text{ cm}^2$ and it is subdivided in 300×352 pixels with $50 \mu\text{m}$ of pitch. The total effective area of the three telescopes is 854 cm^2 at 3 keV, the angular resolution is ≤ 30 arcsec and the field of view is 12.8×12.8 arcmin. IXPE will conduct precise X-ray polarimetry for several categories of cosmic sources, ranging from neutron stars and stellar-mass black holes, to SNRs and AGNs. For the brighter and extended sources, such as PWNe, SNR and AGN large scale jets, IXPE will perform X-ray polarimetric imaging for the first time. For example, the imaging capability will allow to obtain the polarimetric map, with ≤ 30 arcsec angular resolution, of the Crab nebula, improving the result obtained in the '70 by OSO 8, which measured the mean polarization of the entire source [6].

5.2.2. eXTP: Enhanced X-Ray Timing and Polarimetry Mission

The GPD is also the polarimetric detector on board the eXTP mission [83]. The launch is planned earlier than 2025². The primary goals of eXTP comprise the study of the equation of state of matter at supra-nuclear density, Quantum Electro-Dynamics (QED) effects in highly magnetized star and accretion in the strong-field regime of gravity. eXTP exploits simultaneous spectral-timing observations (Silicon Drift Detector (SDD)) in the 0.5–30 keV energy range and polarimetry (GPD) in the 2–10 keV energy range. eXTP is a mission selected as *background mission* in the “Strategic Priority Space Science Program” of the Chinese Academy of Sciences since 2011. The mission consortium comprises Chinese, European and USA institutions. In the updated configuration eXTP comprises 4 telescopes for X-ray polarimetry in the 2–10 keV energy band (GPD 20/80 He/DME at 1 bar of pressure, 1 cm thick gas cell). The effective area of the telescopes is 500 cm^2 at 2 keV with a field of view of 12 arcmin and an angular resolution better than 30 arcsec.

5.2.3. Photoelectric Polarimetry with the GPD towards Hard X-Rays

At energies larger than 10 keV, to increase the quantum efficiency of the GPD, a heavier gas mixture (for example using Ar in place of He) and a thicker absorption gap are needed. In Figure 6, the quality factor (see Equation (8)) is reported for the low and high energy configurations of the GPD. The peak of the quality factor represents the peak of the sensitivity of the polarimeter. This peak is

¹ A background mission in the “Strategic Priority Space Science Program” of the Chinese Academy of Sciences is a project selected to be launched that undergoes an assessment phase. The launch time schedule is adjusted depending on the level of technology readiness reached by the project during the assessment.

² <http://www.isdc.unige.ch/extp/>.

around 3 keV for a He based, or only DME, gas mixtures, at a pressure of 1 bar with an absorption gap of 1 cm. An Ar based gas mixture at 3 bar of pressure with an absorption gap of 3 cm shows the sensitivity peak at about 10 keV [87].

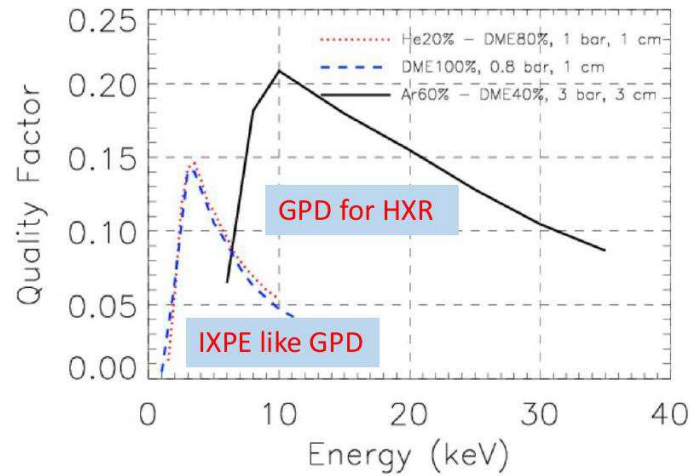


Figure 6. Quality factor for different configurations of the GPD.

A hard X-ray configuration, sensitive up to some tens of keV, is suitable for solar flare polarimetry. The high flux of solar flares allows polarimetry also without optics. However, in this case no image is obtained and only the integrated polarization of the flaring region is possible. The hard X-ray configuration of the GPD was proposed both for distant astrophysical sources [88] and the Sun [89,90], but never approved.

Table 3. Photoelectric X-ray polarimetric missions planned.

Name	Time Schedule	Focal Plane	F.O.V	En. Range	Science Obj.	References
IXPE	launch 2021	yes	12.8×12.8 arcmin ²	2–10 keV	BH, NSs isolated and accreting, AGNs, PWNs, SNRs, Sgr B2	[81,82,84–86]
eXTP	launch before 2025	yes	12×12 arcmin ²	2–10 keV	BH, NSs isolated and accreting, AGNs, PWNs, SNRs, Sgr B2	[83]

5.3. Scattering Polarimetry

The scattering of a photon of energy E on a free electron is described by the Klein-Nishina cross section [91]:

$$\left(\frac{d\sigma}{d\Omega}(E, E', \theta, \phi) \right)_{\text{KN}} = \frac{r_0^2}{2} \frac{E'^2}{E^2} \left[\frac{E}{E'} + \frac{E'}{E} - 2 \sin^2 \theta \cos^2 \phi \right] \quad (11)$$

The out-coming photon has an energy E' which is:

$$E' = \frac{E}{1 + \frac{E}{m_e c^2} (1 - \cos \theta)} \quad (12)$$

The scattering angle θ is the angle between the direction of the incoming photon and the out-coming one. The azimuthal angle ϕ is 0 for the direction parallel to the electric vector of the incoming photon. The Equation (11) tells us that: (1) the maximum of the \cos^2 term is for $\phi = 0$, due to the minus sign of the modulated term. Therefore, differently from the photoelectric effect, the photon

is scattered with a higher probability orthogonally to the direction of polarization of the incoming photon; (2) The constant term $\frac{E}{E'} + \frac{E'}{E}$ makes the incoherent scattering not a perfect polarization analyser. Only if $E = E'$ (Thomson limit), for scattering at $\theta = \pi/2$ the Klein-Nishina cross section is re-written as the Thomson cross section for scattering at $\theta = \pi/2$:

$$\left(\frac{d\sigma}{d\Omega} \left(\frac{\pi}{2}, \phi \right) \right)_{\text{Th.}} = r_0^2 \sin^2 \phi \quad (13)$$

which describes a perfect polarization analyser.

The theoretical modulation factor achievable by an ideal Compton polarimeter is:

$$\mu(\theta) = \frac{N_{\max}(\theta) - N_{\min}(\theta)}{N_{\max}(\theta) + N_{\min}(\theta)} = \frac{\left(\frac{d\sigma}{d\Omega} \right)_{\phi=\frac{\pi}{2}} - \left(\frac{d\sigma}{d\Omega} \right)_{\phi=0}}{\left(\frac{d\sigma}{d\Omega} \right)_{\phi=\frac{\pi}{2}} + \left(\frac{d\sigma}{d\Omega} \right)_{\phi=0}} = \frac{\sin^2 \theta}{\frac{E}{E'} + \frac{E'}{E} - \sin^2 \theta} \quad (14)$$

The modulation factor, as expressed by Equation (14), is shown for different energies in Figure 7. The modulation factor is higher for scattering at $\theta = \pi/2$ and it is lower for higher energy of the incoming radiation. At the Thomson limit, the modulation factor for scattering at $\theta = \pi/2$ is equal to 1 (perfect polarization analyser).

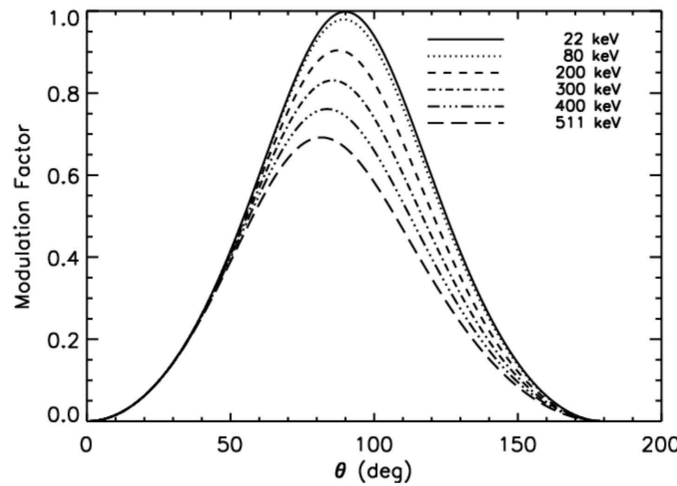


Figure 7. Modulation factor as a function of the scattering angle for different energies of the incoming photon.

In Compton scattering, the interaction of the photon depends also on the influence of the atomic electrons distribution and binding energies, described by the scattering function $S(\chi, Z)$. The product of the scattering function with the Klein-Nishina cross-section gives the angular distribution of scattered photons in matter [92], which is:

$$\frac{d\sigma}{d\Omega} = \left(\frac{d\sigma}{d\Omega} \right)_{\text{KN}} \cdot S(\chi, Z) \quad (15)$$

where Z is the atomic number and $\chi = \sin(\frac{\theta}{2})/\lambda[\text{\AA}]$, in which λ is the incident photon wavelength. The scattering function essentially suppresses forward scattering with respect to the Klein-Nishina formula.

There is a wide *zoology* of polarimeters based on Compton and Thomson scattering. The incoherent nature of Compton scattering allows to deposit a certain amount of energy in the scatterer element, which can be readout in coincidence with the energy deposit in the absorber, where the scattered photon stops. This approach allows to reduce drastically the background with respect to

Thomson scattering polarimeters, which do not allow to readout the energy deposition in the scatterer. In both cases the scattering process competes with photo-absorption and, therefore, scatterers are made of light elements, which are scintillating (plastics or crystals) in Compton polarimeters and passive (for example Lithium) in Thomson polarimeters. The incoherent scattering, in Compton polarimeters, identifies a *natural* energy threshold above which the scattering process is more efficient with respect to absorption. This is shown in Figure 8 for two typical materials of scatterers (BC-404 and p-terphenyl), where the mass attenuation coefficient for scattering (coherent and incoherent) and photo-absorption are reported. Above about 20 keV (point dashed green vertical line) the incoherent scattering in plastic scintillators is the dominating interaction.

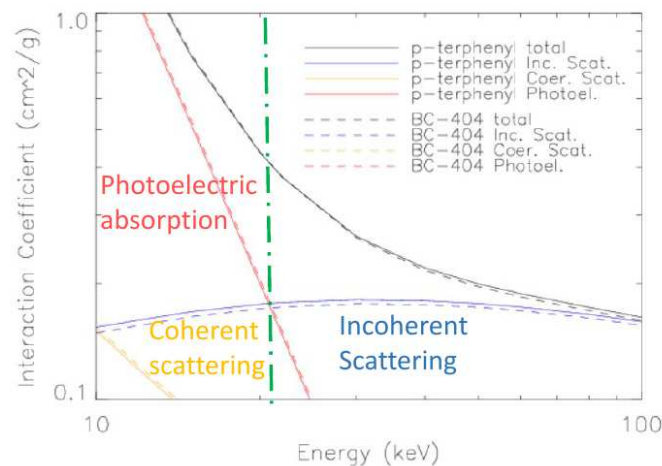


Figure 8. Mass attenuation coefficients of photoelectric absorption, coherent scattering and incoherent scattering for typical plastic scintillator materials (BC-404 and p-terphenyl) which the scatterers are made of.

The Compton polarimeters can be classified into two categories, depending on the material of the scatterer and of the absorber. The *one phase* polarimeters are those in which the scatterer and the absorber are made of the same low Z material. The *two phase* polarimeters are those in which the scatterer is made of a low Z material (higher scattering probability with respect to photoelectric absorption) and the absorber is made of a high Z material, which maximize the absorption probability. Moreover, scattering polarimeters can be focal plane detectors for pointed observations (large effective area depends on the optics) or non-focal plane ones, which can have a large field of view (for example to observe GRBs) or a narrow field of view for pointed observations, if they are collimated.

The typical critical parameters for scattering polarimeters are:

- background rejection, if large sensitive volumes are involved. The mitigation of background is possible by means of the scatterer/absorber coincidence (it is intrinsic of the Compton scattering technique), anticoincidence, passive shielding and a careful estimation of sensitive volumes needed. For Thomson polarimeters background is a very critical issue.
- Scintillation light cross-talk. The mitigation of this effect is possible by means of a careful choice and application of the wrapping around the scintillating elements.
- Scintillating element light loss (for example from the edges). The mitigation of this effect is possible by means of a careful choice of the wrapping and of the optical contact between the interfaces towards the light sensor.

Many scattering polarimeters have been proposed and a lot of demonstrators and pathfinder are flown until nowadays. Relevant examples are discussed in the following sections and their characteristics are summarized in Table 4.

Table 4. Relevant scattering polarimeters examples.

Name	Time Schedule	Focal Plane	F.O.V	En. Range	Science Obj.	References
Thomson						
POLIX	launch 2019	no	$3^\circ \times 3^\circ$	5–30 keV	accr. powered pulsars, BH	[93,94]
SPR-N	launched 2001	no	-	20–100 keV	solar flares	[95,96]
Compton 1 phase						
POLAR	launched 2016	no	$\sim 1/3$ of full sky	50–500 keV	GRB	[97–99]
PoGOLite	launched 2013	no	$\sim 2^\circ \times 2^\circ$	20–240 keV	Crab emission	[100–103]
PoGO+	launched 2016	no	$\sim 2^\circ \times 2^\circ$	20–150 keV	Crab pulsar and nebula, Cygnus X-1	[100–103]
AstroSat CZTI (imager)	launched 2015	no	-	100–380 keV	Crab pulsar and nebula, bright X-ray sources	[104,105]
Compton 2 phases						
X-Calibur	launched 2014, 2016	yes	8 arcmin at 20 keV	20–60 keV	BHs, NSs, magnetars, AGN jets	[106–110]
PolariS	assesment	yes/no (also a wide field polarimeter)	10×10 arcmin ²	10–80 keV	SNRs, BHs, accretion in X-ray pulsars, GRBs	[111]
GRAPE	launched 2014 and 2016; new design assesment	no	wide	50–500 keV	transient sources, GRBs, solar flares	[112–117]
PHENEX	launched 2006	no	4.8°	40–200 keV	Crab Nebula	[118–120]
GAP	launched 2010	no	π sr	50–300 keV	GRBs, Crab pulsar and nebula	[121–124]
SPHiNX	Phase-A/B1 assesment	no	$\pm 60^\circ$	50–500 keV	GRBs	[125]
PENGUIN-M	launched 2009, lost	no	-	20–150 keV	solar flares	[126]
PING-P	launch after 2025	no	-	20–150 keV	solar flares	[127]

5.3.1. POLIX

POLIX [93,94] is a Thomson scattering X-ray polarimeter of the Raman Research Institute (RRI) for a small satellite mission of ISRO. The launch is planned in 2019. The polarimeter consists of proportional counters as X-ray detectors, placed on all sides of a scattering element. A collimator restricts the field of view of the instrument to $3^\circ \times 3^\circ$. The polarimeter rotates around the viewing axis. It operates in the 5–30 keV energy band. The MDP of 2–3% is achieved for a 50 mCrab source with 1×10^6 s of exposure.

5.3.2. SPR-N, PENGUIN-M and PING-P

In the recent past, since 2000, only three detectors measured the X-ray polarization of solar flares: SPR-N, RHESSI and PENGUIN-M. RHESSI [128] (launched in 2002) was designed as an imaging-spectrometer exploiting Compton scattering among Ge elements. It has, therefore, polarimetric capabilities. On the contrary, SPR-N and PENGUIN-M were designed specifically to measure the polarization of X-rays by means of scattering. These polarimeters, as well as the upcoming PING-P, are part of the effort along the pathway to develop sensitive polarimeters for solar flare physics.

The SPR-N polarimeter was launched in 2001 on board the past mission CORONAS-F. The SPR-N polarimeter measured the X-ray polarization degree in the energy ranges 20–40 keV, 40–60 keV and 60–100 keV [95,96]. SPR-N exploits Thompson scattering on beryllium plates mounted inside a hollow hexagonal prism. Six scintillation detectors are symmetrically mounted on the prism faces around the scatterer. A phoswich detector (CsI(Na)/plastic scintillator) is used to discriminate

charged particles. The geometric area of each detector is about 8 cm^2 . The effective area ranges from $\simeq 0.3 \text{ cm}^2$ to $\simeq 1.5 \text{ cm}^2$ at 20 keV and 100 keV, respectively.

The PENGUIN-M instrument [126], on board the CORONAS-PHOTON mission, is designed to measure the degree of linear polarization of X-rays from solar flares in the energy range 20–150 keV and their X-ray spectra in the energy range 2–500 keV by means of Compton scattering. CORONAS-PHOTON was launched in 2009, but due to a failure of the spacecraft it was lost in 2010.

Therefore, PING-P [127] is the new Compton polarimeter under development. The launch is scheduled after 2025. PING-P comprises three p-terphenyl ($\text{C}_{18}\text{H}_{14}$) scatterers and six units of CsI(Tl) crystals as absorber detectors. It will operate in the 20–150 keV energy range. Scintillating elements are coupled to photomultiplier tubes (PMTs).

5.3.3. POLAR

POLAR [97–99] is a compact wide field polarimeter developed by an international collaboration of Switzerland, China and Poland. It was launched on 15 September 2016 to be hosted on-board the China Space Laboratory TG-2. POLAR is aimed to measure the linear polarization of hard X-rays from transient sources between 50 keV to 500 keV. It consists of 25 identical modules comprising 64 plastic scintillator bars, which are readout by multi-anode photo multiplier tubes (MAPMTs). POLAR energy range is optimized for the detection of the prompt emission of the gamma-ray bursts.

5.3.4. PoGOLite and PoGO+: Polarised Gamma-Ray Observer

PoGOLite [129] is a pathfinder balloon-born experiment which flew in 2013. It operated in the 20–240 keV energy range. PoGOLite design is conceived for pointed observations, since a collimator is placed in front of an array of 61 low Z plastic scintillator bars. A detector bar is 20 cm long and it is sandwiched between two anti-coincidence components: a BGO (Bismuth Germanate— $\text{Bi}_4\text{Ge}_3\text{O}_{12}$) scintillator (4 cm long) and the collimator made of an active plastic scintillator (60 cm long). The anti-coincidence is complemented with additional 30 rods of BGO scintillators (60 cm tall) placed around the main detector cells. The scintillators of the detector are readout by PMTs. A first stage of background rejection is performed by means of the pulse discrimination in the detector and in the BGO veto system. A post-flight analysis allows for a more accurate background subtraction. Moreover, an additional passive neutron shield made of polyethylene surrounds the instrument. This experience allowed to optimize the detector to design the PoGO+ polarimeter, which flew in the summer 2016 [100–103,130].

5.3.5. X-Calibur

X-Calibur [106–110] is a balloon-born hard X-ray scattering polarimeter aimed to measure the polarization from BHs, NSs and AGNs. InFOC μ S (International Focusing Optics Collaboration for μ -Crab Sensitivity) grazing incidence X-ray mirror focuses X-rays onto a 13 mm diameter scatterer made of a plastic scintillator rod. The absorbers are an array of Cadmium-Zinc-Telluride (CZT) detectors surrounding the scattering rod. X-Calibur was launched in 2014 and 2016 and a new launch is scheduled in 2018/2019 from McMurdo, Antarctica.

5.3.6. PolariS

PolariS (Polarimetry Satellite) [111] is a proposed small mission (JAXA) designed to perform polarimetry in the 10–80 keV energy band. The main scientific objective of PolariS mission is the hard X-ray polarimetry of bright SNRs, BHs and NSs. Moreover, PolariS mission is aimed to measure the X-ray and γ -ray polarization of transient sources such as GRBs by means of a wide field polarimeter based on the GAP design (see Section 5.3.8). The main instrument of PolariS payload comprises three hard X-ray telescopes coupled to three Compton scattering polarimeters in a focal plane configuration. The scattering polarimeters are an optimization derived by PHENEX,

which is a non-focal plane version prototype (flown on a balloon born experiment in 2006 [118], see Section 5.3.7). The polarimeters consists of two kinds of (plastic and GSO) scintillator pillars and MAPMTs. A coarse imaging capability (few arcmin) is allowed by the scattering elements that are readout separately. However, the asymmetric light cross-talk between neighbour rods introduces systematics that need to be controlled.

5.3.7. PHENEX (Polarimetry for High ENergy X-Ray)

PHENEX was launched on a balloon flight on June 2006 to observe for about one hour the polarization of the Crab Nebula in hard X-ray band [118]. The high level of background measured (3 times the Crab signal) and problems to the attitude control system compromised the observation.

The PHENEX polarimeter comprises 4 modules of 6×6 squared plastic scintillators surrounded by 28 CsI(Tl) elements. The CsI(Tl) scintillators are shielded by a passive graded shields made of Pb and Sn on the side and on the top. The detector comprises a Mo collimator to perform pointed observations with an opening angle limited to 4.8° (FWHM) in an energy range of 20–200 keV.

5.3.8. GAP: Gamma-Ray Burst Polarimeter

GAP is flying aboard the small solar power sail demonstrator IKAROS [121–124]. It is a compact polarimeter (17 cm of diameter and 16 cm of height). The central scatterer is a dodecagon plastic scintillator (6 cm of length) coupled with a non-position sensitive photomultiplier tube. It is surrounded by 12 CsI scintillators, which are also coupled to PMTs to measure coincidence signals. GAP is mounted on the bottom panel of IKAROS and observes always in the anti-solar direction.

5.3.9. GRAPE (Gamma RAY Polarimeter Experiment)

The GRAPE [112–117] polarimeter is based on Compton scattering between low-Z scatterers and high-Z absorbers in a squared array of scintillating bars. It is a balloon-born hard X-ray polarimeter which operate between 50 keV and 500 keV, for GRBs observations. It flew during two long duration flights in 2011 and 2014. During the first flight the Crab was observed to validate the scientific capability of the polarimeter, but the background was much higher than expected. The second flight was terminated without a sufficient data collection.

An updated design of the polarimeter underwent some assessments [131] during different mission proposals to NASA (Astrophysics Mission of Opportunity (MoO) in 2012 and Small Explorer (SMEX) in 2014).

The original design of the GRAPE detector module comprised 64 optically independent scintillator elements organized in a 8×8 array. The central 6×6 array was made of low-Z plastic scintillator ($5 \text{ mm} \times 5 \text{ mm} \times 6 \text{ cm}$). It was surrounded by the remaining 28 elements of high-Z inorganic scintillator, which acted as a calorimeter to detect with high efficiency the Compton scattered photons. A single detector module was readout by multi-anode photo-multiplier tube (MAPMT). This design was affected by a relevant optical cross-talk between adjacent elements of the scintillator array, due to light spreading at the base of scintillating bars [131].

In the new design an array of completely isolated scintillator elements, each with its own PMT readout, was employed. The number of array elements was reduced to 49. Moreover, the Compton imaging capability was added by including a depth measurement, within each scintillator element, to allow GRBs localization. This capability allows also to reduce the cosmic diffuse γ -ray background.

5.3.10. SPHiNX: Segmented Polarimeter for High eNergy X-Rays

SPHiNX [125] is a proposal to the Swedish Space Agency that underwent a Phase-A/B1 assessment study. It comprises 42 triangular units of low Z plastics scintillators grouped in hexagons and readout by PMTs. Around each hexagon there are 120 units of high Z rectangular GAGG ($\text{Gd}_3\text{Al}_2\text{Ga}_3\text{O}_{12}$) scintillators, which are readout by multi-pixel photon counters (MPPC) to allow the

detection of scattered photons. With a field of view of $\pm 60^\circ$ and an energy range between 50–500 keV, it is optimized to study the GRB prompt emission.

5.3.11. Scattering Polarimetry CdTe/CZT

New different configurations based on CdTe/CZT detectors [132] for high-energy polarimetry are under exploration. They include 2D and 3D CZT/CdTe spectroscopic imagers with coincidence readout logic to handle scattering events and to perform simultaneously polarization, spectroscopy, imaging, and timing measurements. Particularly interesting is the development of Laue lenses that would allow a high energy wide band-pass. In CdTe and CZT detectors the mass attenuation coefficient³ of Compton scattering equals the photoelectric absorption at about 250 keV (see Figure 8 as a comparison with plastic scintillators for which the energy threshold is about 20 keV). Therefore, at lower energy the scattering process is less efficient with respect to photoelectric absorption.

Recently, the AstroSat CZT imager measured the Crab pulsar and nebula polarization in the 100–380 keV energy band [104]. The AstroSat CZT imager is a coded aperture telescope designed for hard X-ray observations, calibrated also on ground for polarization measurements [105]. It consists of a pixilated detector plane with a geometric area of 976 cm² with a pixel thickness of 5 mm and a size of 2.5 mm × 2.5 mm. The polarization measurement is performed by detecting coincident events among neighbour pixels. In the 100–380 keV energy range the recoil electron has an energy much lower than the scattered photon. Therefore, it is assumed that the pixel with the lower energy deposition is the scattering pixel, while the second pixel is the absorbing one. Pixels are squared and the instrument does not rotate. The polarization dependence of the off-pulse polarization claimed by AstroSat was not confirmed by PoGo+ in a partially overlapping energy band [130].

6. Conclusions

In the last years X-ray polarimetry in astronomy started to be a crowded field of new theoretical studies, instrument designs and also detectors, which flew on board balloon experiments or demonstrative missions. Many different physical processes are responsible for the emission of polarized X-rays. These processes involve particle acceleration, emission in strong and ultra-strong magnetic fields, scattering on aspherical geometries and also fundamental physics. The panorama of astrophysical sources spans from galactic to extragalactic ones and from point like (BHs, NS) to extended (PWNe, SNRs, Molecular Clouds). Some of the new polarimeters under assessment or development (PolariS, IXPE, eXTP, updated version of GRAPE) have an imaging capability that would allow for the first time to measure the polarization of different regions of extended sources, thus better constraining the parameters of source models. Among these polarimeters, IXPE and eXTP are based on the GPD technology, which allows a quite fine imaging, at the level of some tens of arcseconds. Their imaging capability is currently limited by the optics performance, not by the detector itself. The detector technologies available in the quite large energy range, from $\lesssim 1$ keV to hundreds of keV, are based on diffraction onto multilayer mirrors (or crystals), photoelectric effect and scattering (Thomson or Compton). New activities are planned for the near future and a *critical mass* (among Europe, USA, Japan, China, India etc.) in the scientific community starts to be relevant to sustain larger new projects. In this framework, particularly relevant is the approval of the Imaging X-ray Polarimetry Explorer (IXPE) that represents the first step towards these larger activities and will make X-ray polarimetry a valuable observational tool worth to be used as well as imaging, spectroscopy and timing.

³ Derived from <https://physics.nist.gov/PhysRefData/Xcom/html/xcom1.html>.

Acknowledgments: I would like to express my special thanks to the organisers of the “Alsation Workshop on X-ray Polarimetry” held in Strasbourg (France) the 13–15 November 2017 for inviting me to discuss the topics of this paper about future missions for X-ray polarimetry. I would like also to express my special thanks to the agreement ASI-INAF No. 2017-12-H.0 for the participation to the IXPE (Imaging X-ray Polarimeter Explorer) mission approved by NASA for having funded my participation in the meeting.

Conflicts of Interest: The author is a member of the IXPE Team.

References

- Westfold, K.C. The Polarization of Synchrotron Radiation. *Astrophys. J.* **1959**, *130*, 241.
- Kennel, C.F.; Coroniti, F.V. Confinement of the Crab pulsar’s wind by its supernova remnant. *Astrophys. J.* **1984**, *283*, 694–709.
- Kennel, C.F.; Coroniti, F.V. Magnetohydrodynamic model of Crab nebula radiation. *Astrophys. J.* **1984**, *283*, 710–730.
- Nakamura, Y.; Shibata, S. Polarization of the Crab Nebula with disordered magnetic components. *Mon. Not. R. Astron. Soc.* **2007**, *381*, 1489–1498.
- Volpi, D.; Del Zanna, L.; Amato, E.; Bucciantini, N. Polarization in Pulsar Wind Nebulae. *Astrophys. J.* **2009**, *773*, 173–181.
- Weisskopf, M.C.; Silver, E.H.; Kestenbaum, H.L.; Long, K.S.; Novick, R. A precision measurement of the X-ray polarization of the Crab Nebula without pulsar contamination. *Astrophys. J.* **1978**, *220*, L117–L121.
- Helder, E.A.; Vink, J.; Bykov, A.M.; Ohira, Y.; Raymond, J.C.; Terrier, R. Observational Signatures of Particle Acceleration in Supernova Remnants. *Space Sci. Rev.* **2012**, *173*, 369–431.
- Bykov, A.M.; Uvarov, Y.A.; Bloemen, J.B.G.M.; den Herder, J.W.; Kaastra, J.S. A model of polarized X-ray emission from twinkling synchrotron supernova shells. *Mon. Not. R. Astron. Soc.* **2009**, *399*, 1119–1125.
- Reynolds, S.P.; Chevalier, R.A. Nonthermal Radiation from Supernova Remnants in the Adiabatic Stage of Evolution. *Astrophys. J.* **1981**, *245*, 912.
- Blandford, R.D.; Payne, D.G. Hydromagnetic flows from accretion discs and the production of radio jets. *Mon. Not. R. Astron. Soc.* **1982**, *199*, 883–903.
- Fender, R.P. Powerful jets from black hole X-ray binaries in low/hard X-ray states. *Mon. Not. R. Astron. Soc.* **2001**, *322*, 31–42.
- Mirabel, I.F.; Rodríguez, L.F. Sources of Relativistic Jets in the Galaxy. *Annu. Rev. Astron. Astrophys.* **1999**, *37*, 409–443.
- Gluckstern, R.L.; Hull, M.H. Polarization Dependence of the Integrated Bremsstrahlung Cross Section. *Phys. Rev.* **1953**, *90*, 1030–1035.
- Zharkova, V.V.; Arzner, K.; Benz, A.O.; Browning, P.; Dauphin, C.; Emslie, A.G.; Fletcher, L.; Kontar, E.P.; Mann, G.; Onofri, M.; et al. Recent Advances in Understanding Particle Acceleration Processes in Solar Flares. *Space Sci. Rev.* **2011**, *159*, 357–420.
- Rosen, S.R.; Mason, K.O.; Cordova, F.A. EXOSAT X-ray observations of the eclipsing magnetic cataclysmic variable EX Hya. *Mon. Not. R. Astron. Soc.* **1988**, *231*, 549–573.
- Lamb, D.Q.; Masters, A.R. X and UV radiation from accreting magnetic degenerate dwarfs. *Astrophys. J.* **1979**, *234*, L117–L122.
- Meszáros, P.; Novick, R.; Szentgyorgyi, A.; Chanan, G.A.; Weisskopf, M.C. Astrophysical implications and observational prospects of X-ray polarimetry. *Astrophys. J.* **1988**, *324*, 1056–1067.
- Gnedin, I.N.; Sunyaev, R.A. Polarization of optical and X-radiation from compact thermal sources with magnetic field. *Astron. Astrophys.* **1974**, *36*, 379–394.
- Ventura, J. Scattering of light in a strongly magnetized plasma. *Phys. Rev. D* **1979**, *19*, 1684–1695.
- Gnedin, I.N.; Pavlov, G.G.; Shibano, I.A. The effect of vacuum birefringence in a magnetic field on the polarization and beaming of X-ray pulsars. *Sov. Astron. Lett.* **1978**, *4*, 117–119.
- Ventura, J.; Nagel, W.; Meszáros, P. Possible vacuum signature in the spectra of X-ray pulsars. *Astrophys. J.* **1979**, *233*, L125–L128.
- Meszáros, P.; Ventura, J. Vacuum polarization effects on radiative opacities in a strong magnetic field. *Phys. Rev. D* **1979**, *19*, 3565–3575.

23. Wijnands, R.; Homan, J.; Heinke, C.O.; Miller, J.M.; Lewin, W.H.G. Chandra Observations of the Accretion-driven Millisecond X-Ray Pulsars XTE J0929-314 and XTE J1751-305 in Quiescence. *Astrophys. J.* **2005**, *619*, 492–502.
24. Patruno, A.; Watts, A.L. Accreting Millisecond X-Ray Pulsars. *arXiv* **2012**, arXiv:astro-ph.HE/1206.2727.
25. Poutanen, J. Modeling pulse profiles of accreting millisecond pulsars. In *American Institute of Physics Conference Series*; Wijnands, R., Altamirano, D., Soleri, P., Degenaar, N., Rea, N., Casella, P., Patruno, A., Linares, M., Eds.; American Institute of Physics: College Park, MD, USA, 2008; Volume 1068, pp. 77–86.
26. Viironen, K.; Poutanen, J. Light curves and polarization of accretion- and nuclear-powered millisecond pulsars. *Astron. Astrophys.* **2004**, *426*, 265–274.
27. Słowiowska, A.; Kanbach, G.; Kramer, M.; Stefanescu, A. Optical polarization of the Crab pulsar: Precision measurements and comparison to the radio emission. *Mon. Not. R. Astron. Soc.* **2009**, *397*, 103–123.
28. Taverna, R.; Muleri, F.; Turolla, R.; Soffitta, P.; Fabiani, S.; Nobili, L. Probing magnetar magnetosphere through X-ray polarization measurements. *Mon. Not. R. Astron. Soc.* **2014**, *438*, 1686–1697.
29. Thompson, C.; Lyutikov, M.; Kulkarni, S.R. Electrodynamics of Magnetars: Implications for the Persistent X-Ray Emission and Spin-down of the Soft Gamma Repeaters and Anomalous X-Ray Pulsars. *Astrophys. J.* **2002**, *574*, 332–355.
30. Turolla, R.; Zane, S.; Watts, A.L. Magnetars: The physics behind observations—A review. *Rep. Prog. Phys.* **2015**, *78*, 116901.
31. Sunyaev, R.A.; Titarchuk, L.G. Comptonization of low-frequency radiation in accretion disks Angular distribution and polarization of hard radiation. *Adv. Space Res.* **1984**, *3*, 245–248.
32. Sazonov, S.Y.; Sunyaev, R.A. Scattering in the inner accretion disk and the waveforms and polarization of millisecond flux oscillations in LMXBs. *Astron. Astrophys.* **2001**, *373*, 241–250.
33. Rees, M.J. Expected polarization properties of binary X-ray sources. *Mon. Not. R. Astron. Soc.* **1975**, *171*, 457–465.
34. Haardt, F.; Matt, G. X-ray polarization in the two-phase model for AGN and X-ray binaries. *Mon. Not. R. Astron. Soc.* **1993**, *261*, 346–352.
35. Poutanen, J.; Vilhu, O. Compton scattering of polarized light in two-phase accretion discs. *Astron. Astrophys.* **1993**, *275*, 337–344.
36. Schnittman, J.D.; Krolik, J.H. X-ray Polarization from Accreting Black Holes: Coronal Emission. *Astrophys. J.* **2010**, *712*, 908–924.
37. Matt, G.; Costa, E.; Perola, G.C.; Piro, L. X-ray polarization of the reprocessed emission from accretion disk in Seyfert galaxies. In *Two Topics in X-Ray Astronomy, Volume 1: X Ray Binaries. Volume 2: AGN and the X Ray Background*; Hunt, J., Battrick, B., Eds.; ESA Special Publication: Amsterdam, The Nederland, 1989; Volume 296, pp. 991–993.
38. Ponti, G.; Morris, M.R.; Terrier, R.; Goldwurm, A. Traces of Past Activity in the Galactic Centre. In *Cosmic Rays in Star-Forming Environments*; Torres, D.F., Reimer, O., Eds.; Springer: New York, NY, USA, 2013; Volume 34, p. 331.
39. Churazov, E.; Sunyaev, R.; Sazonov, S. Polarization of X-ray emission from the Sgr B2 cloud. *Mon. Not. R. Astron. Soc.* **2002**, *330*, 817–820.
40. Koyama, K.; Maeda, Y.; Sonobe, T.; Takeshima, T.; Tanaka, Y.; Yamauchi, S. ASCA View of Our Galactic Center: Remains of Past Activities in X-Rays? *Publ. Astron. Soc. Jpn.* **1996**, *48*, 249–255.
41. Sunyaev, R.A.; Markevitch, M.; Pavlinsky, M. The center of the Galaxy in the recent past—A view from GRANAT. *Astrophys. J.* **1993**, *407*, 606–610.
42. Stark, R.F.; Connors, P.A. Observational test for the existence of a rotating black hole in CYG X-1. *Nature* **1977**, *266*, 429–430.
43. Connors, P.A.; Stark, R.F.; Piran, T. Polarization features of X-ray radiation emitted near black holes. *Astrophys. J.* **1980**, *235*, 224–244.
44. Dovčiak, M.; Muleri, F.; Goosmann, R.W.; Karas, V.; Matt, G. Thermal disc emission from a rotating black hole: X-ray polarization signatures. *Mon. Not. R. Astron. Soc.* **2008**, *391*, 32–38.
45. Li, L.; Narayan, R.; McClintock, J.E. Inferring the Inclination of a Black Hole Accretion Disk from Observations of its Polarized Continuum Radiation. *Astrophys. J.* **2009**, *691*, 847–865.
46. Schnittman, J.D.; Krolik, J.H. X-ray Polarization from Accreting Black Holes: II. The Thermal State. *Astrophys. J.* **2009**, *712*, 908–924.

47. Gambini, R.; Pullin, J. Nonstandard optics from quantum space-time. *Phys. Rev. D* **1999**, *59*, 2431–2473.
48. Bassan, N.; Mirizzi, A.; Roncadelli, M. Axion-like particle effects on the polarization of cosmic high-energy gamma sources. *J. Cosmol. Astropart. Phys.* **2010**, *2010*, 1323–1333.
49. Weisskopf, M.; Elsner, R.; O'Dell, S. On understanding the figures of merit for detection and measurement of X-ray polarization. *Proc. SPIE* **2010**, *7732*, 77320E.
50. Strohmayer, T.E.; Kallman, T.R. On the Statistical Analysis of X-Ray Polarization Measurements. *Astrophys. J.* **2013**, *773*, 173–181.
51. Kislat, F.; Clark, B.; Beilicke, M.; Krawczynski, H. Analyzing the data from X-ray polarimeters with Stokes parameters. *Astropart. Phys.* **2015**, *68*, 45–51.
52. Jourdain, E.; Roques, J.P.; Chauvin, M.; Clark, D.J. Separation of Two Contributions to the High Energy Emission of Cygnus X-1: Polarization Measurements with INTEGRAL SPI. *Astrophys. J.* **2012**, *30*, 27.
53. Muleri, F. On the Operation of X-Ray Polarimeters with a Large Field of View. *Astrophys. J.* **2014**, *782*, 28.
54. Silver, E.H.; Simonovich, A.; Labov, S.E.; Novick, R.; Kaaret, P.E.; Martin, C.; Hamilton, T.; Weisskopf, M.C.; Elsner, R.F.; Beeman, J.W.; et al. Bragg crystal polarimeters. In Proceedings of the SPIE Annual International Technical Symposium on Optical and Optoelectronic Applied Science and Engineering, San Diego, CA, USA, 6–11 August 1989; Volume 1160, p. 598.
55. Emslie, A.G.; Brown, J.C. The polarization and directivity of solar-flare hard X-ray bremsstrahlung from a thermal source. *Astrophys. J.* **1980**, *237*, 1015–1023.
56. Doschek, G.A. X-ray and EUV Observations of Solar Flares. In *Stellar Coronae in the Chandra and XMM-NEWTON Era*; Favata, F., Drake, J.J., Eds.; Astronomical Society of the Pacific: San Francisco, CA, USA, 2002; Volume 277, p. 89.
57. Steslicki, M.; Sylwester, J.; Plocieniak, S.; Bakala, J.; Szaforz, Z.A.; Scislowski, D.; Kowalinski, M.; Hernandez, J.; Vadimovich Kuzin, S.; Shestov, S. Soft X-ray polarimeter-spectrometer SOLPEX. In Proceedings of the IAU General Assembly, Honolulu, HI, USA, 3–14 August 2015; Volume 22.
58. Vishnyakov, E.A.; Bogachev, S.A.; Kirichenko, A.S.; Reva, A.A.; Loboda, I.P.; Malyshev, I.V.; Ulyanov, A.S.; Dyatkov, S.Y.; Erkhova, N.F.; Pertsov, A.A.; et al. Joint observations of solar corona in space projects ARKA and KORTES. *Proc. SPIE* **2017**, *10235*, 102350B.
59. Marshall, H.L.; Murray, S.S.; Chappell, J.H.; Schnopper, H.W.; Silver, E.H.; Weisskopf, M.C. Realistic, inexpensive, soft X-ray polarimeter and the potential scientific return. *Proc. SPIE* **2003**, *4843*, 360–371.
60. She, R.; Feng, H.; Muleri, F.; Soffitta, P.; Xu, R.; Li, H.; Bellazzini, R.; Wang, Z.; Spiga, D.; Minuti, M.; et al. LAMP: A micro-satellite based soft x-ray polarimeter for astrophysics. In Proceedings of the UV, X-Ray, and Gamma-Ray Space Instrumentation for Astronomy XIX, San Diego, CA, USA, 9–10 August 2015; Volume 9601.
61. Costa, E.; Soffitta, P.; Bellazzini, R.; Brez, A.; Lumb, N.; Spandre, G. An efficient photoelectric X-ray polarimeter for the study of black holes and neutron stars. *Nature* **2001**, *411*, 662–665.
62. Bellazzini, R.; Spandre, G.; Minuti, M.; Baldini, L.; Brez, A.; Latronico, L.; Omodei, N.; Razzano, M.; Massai, M.M.; Pesce-Rollins, M.; et al. A sealed Gas Pixel Detector for X-ray astronomy. *Nucl. Instrum. Methods Phys. Res. A* **2007**, *579*, 853–858.
63. Marshall, H.L.; Schulz, N.S.; Trowbridge Heine, S.N.; Heilmann, R.K.; Gunter, M.; Egan, M.; Hellickson, T.; Schattenburg, M.; Chakrabarty, D.; Windt, D.L.; et al. The rocket experiment demonstration of a soft x-ray polarimeter (REDSoX Polarimeter). In Proceedings of the UV, X-Ray, and Gamma-Ray Space Instrumentation for Astronomy XX, San Diego, USA, 06–10 August 2017; Volume 10397.
64. Marshall, H.L. A Soft X-ray Polarimeter. In Proceedings of the Alsatian Workshop of X-Ray Polarimetry, Strasburg, France, 13–15 November 2017, in preparation on Galaxies (ISSN 2075-4434).
65. Panini, S.S. Development of multilayer mirror based soft X-ray polarimeter. In Proceedings of the Alsatian Workshop of X-ray Polarimetry, Strasburg, France, 13–15 November 2017, in preparation on Galaxies (ISSN 2075-4434).
66. Ghosh, P.K. *Introduction to Photoelectron Spectroscopy*; John Wiley & Sons: Hoboken, NJ, USA, 1983.
67. Black, J.K.; Baker, R.G.; Deines-Jones, P.; Hill, J.E.; Jahoda, K. X-ray polarimetry with a micropattern TPC. *Nucl. Instrum. Methods Phys. Res. A* **2007**, *581*, 755–760.
68. Swank, J.; Kallman, T.; Jahoda, K.; Black, K.; Deines-Jones, P.; Kareet, P. Gravity and Extreme Magnetism SMEX (GEMS). *X-ray Polarimetry: A New Window in Astrophysics*; Cambridge University Press: Cambridge, MA, USA, 2010.

69. Jahoda, K. The Gravity and Extreme Magnetism Small Explorer. *Proc. SPIE* **2010**, 7732, 285–302.
70. Hill, J.E.; Baker, R.G.; Black, J.K.; Browne, M.J.; Baumgartner, W.H.; Caldwell, E.M.; Cantwell, J.D.; Davies, A.; Desai, A.B.; Dickens, P.L.; et al. The design and qualification of the GEMS x-ray polarimeters. In Proceedings of the Space Telescopes and Instrumentation 2012: Ultraviolet to Gamma Ray, Amsterdam, Netherlands, 1–6 July 2012; Volume 8443.
71. Enoto, T.; Black, J.K.; Kitaguchi, T.; Hayato, A.; Hill, J.E.; Jahoda, K.; Tamagawa, T.; Kaneko, K.; Takeuchi, Y.; Yoshikawa, A.; et al. Performance verification of the Gravity and Extreme Magnetism Small explorer (GEMS) X-ray polarimeter. In Proceedings of the Space Telescopes and Instrumentation 2014: Ultraviolet to Gamma Ray, Montreal, QC, Canada, 22–26 June 2014; Volume 9144.
72. Kitaguchi, T.; Tamagawa, T.; Hayato, A.; Enoto, T.; Yoshikawa, A.; Kaneko, K.; Takeuchi, Y.; Black, K.; Hill, J.; Jahoda, K.; et al. Monte-Carlo estimation of the inflight performance of the GEMS satellite X-ray polarimeter. In Proceedings of the Space Telescopes and Instrumentation 2014: Ultraviolet to Gamma Ray, Montreal, QC, Canada, 22–26 June 2014; Volume 9144.
73. Hill, J.E.; Black, J.K.; Jahoda, K.; Tamagawa, T.; Iwakiri, W.; Kitaguchi, T.; Kubota, M.; Kaaret, P.; McCurdy, R.; Miles, D.M.; et al. The X-ray polarimeter instrument on board the Polarimeter for Relativistic Astrophysical X-ray Sources (PRAXyS) mission. In Proceedings of the Space Telescopes and Instrumentation 2016: Ultraviolet to Gamma Ray, Edinburgh, UK, 26 June–1 July 2016; Volume 9905.
74. Iwakiri, W.B.; Black, J.K.; Cole, R.; Enoto, T.; Hayato, A.; Hill, J.E.; Jahoda, K.; Kaaret, P.; Kitaguchi, T.; Kubota, M.; et al. Performance of the PRAXyS X-ray polarimeter. *Nucl. Instrum. Methods Phys. Res. A* **2016**, 838, 89–95.
75. Tamagawa, T.; PRAXyS Team. X-Ray Polarimetry Mission PRAXyS. 7 Years of MAXI: Monitoring X-Ray Transients, Held 5–7 December 2016 at RIKEN. Available online: <https://indico2.riken.jp/indico/conferenceDisplay.py?confId=2357> (accessed on 24 May 2018).
76. Nakano, T.; Tamagawa, T.; Iwakiri, W.; Hayato, A.; Kubota, M.; Nishida, K.; Kitaguchi, T.; Toda, K.; Tanaka, N.; Mizuno, T.; et al. End-to-End Test of the Mirror and Polarimeter of PRAXyS. 7 Years of MAXI: Monitoring X-ray Transients, Held 5–7 December 2016 at RIKEN. Available online: <https://indico2.riken.jp/indico/conferenceDisplay.py?confId=2357> (accessed on 24 May 2018).
77. Bellazzini, R.; Brez, A.; Minuti, M.; Pinchera, M.; Spandre, G.; Muleri, F.; Costa, E.; Di Cosimo, S.; Fabiani, S.; Lazzarotto, F.; et al. A polarimeter for IXO. In *X-Ray Polarimetry: A New Window in Astrophysics*; Cambridge University Press: Cambridge, MA, USA, 2010.
78. Tagliaferri, G.; Argan, A.; Bellazzini, R.; Bookbinder, J.; Catalano, O.; Cavazzuti, E.; Costa, E.; Cusumano, G.; Fiore, F.; Fiorini, C.; et al. NHXM: A New Hard X-ray imaging and polarimetric Mission. In Proceedings of the Society of Photo-Optical Instrumentation Engineers (SPIE) Conference, San Diego, USA, 27 June - 2 July 2010.
79. Costa, E.; Bellazzini, R.; Tagliaferri, G.; Matt, G.; Argan, A.; Attinà, P.; Baldini, L.; Basso, S.; Brez, A.; Citterio, O.; et al. POLARIX: A pathfinder mission of X-ray polarimetry. *Experimental Astron.* **2010**, 28, 137–183.
80. Soffitta, P.; Bellazzini, R.; Bozzo, E.; Burwitz, V.; Castro-Tirado, A.; Costa, E.; Courvoisier, T.; Feng, H.; Gburek, S.; Goosmann, R.; et al. XIPE: The x-ray imaging polarimetry explorer. In Proceedings of the Society of Photo-Optical Instrumentation Engineers (SPIE) Conference, Edinburgh, United Kingdom, 26 June - 1 July 2016; Volume 9905, p. 990515.
81. Weisskopf, M.C.; Ramsey, B.; O'Dell, S.; Tennant, A.; Elsner, R.; Soffitta, P.; Bellazzini, R.; Costa, E.; Kolodziejczak, J.; Kaspi, V.; et al. The Imaging X-ray Polarimetry Explorer (IXPE). In Proceedings of the Space Telescopes and Instrumentation 2016: Ultraviolet to Gamma Ray, Edinburgh, UK, 26 June–1 July 2016; Volume 9905, p. 990517.
82. Soffitta, P.; IXPE Team. IXPE: The Imaging X-ray Polarimetry Explorer. In Proceedings of the Optics + Photonics 2017: UV, X-Ray, and Gamma-Ray Space Instrumentation for Astronomy, San Diego, USA, 06–10 August 2017; Volume 1039719.
83. Zhang, S.N.; Feroci, M.; Santangelo, A.; Dong, Y.W.; Feng, H.; Lu, F.J.; Nandra, K.; Wang, Z.S.; Zhang, S.; Bozzo, E.; et al. eXTP: Enhanced X-ray Timing and Polarization mission. In Proceedings of the Space Telescopes and Instrumentation 2016: Ultraviolet to Gamma Ray, Edinburgh, UK, 26 June–1 July 2016; Volume 9905, p. 99051Q.

84. Sgrò, C.; IXPE Team. The gas pixel detector on board the IXPE mission. In Proceedings of the Optics + Photonics 2017: UV, X-Ray, and Gamma-Ray Space Instrumentation for Astronomy, San Diego, USA, 06–10 August 2017; Volume 1039716.
85. Muleri, F.; Baldini, L.; Baumgartner, W.; Lefevre, C.; Kolodziejczak, J.; Fabiani, S.; Odell, S.L.; Ramsey, B.; Sgrò, C.; Soffitta, P.; et al. The gas pixel detector on board the IXPE mission. In Proceedings of the Optics + Photonics 2017: UV, X-Ray, and Gamma-Ray Space Instrumentation for Astronomy, San Diego, USA, 06–10 August 2017; Volume 1039717.
86. Fabiani, S.; IXPE Team. Imaging as a tool for the characterization of the gas pixel detector photoelectric polarimeter. In Proceedings of the Optics + Photonics 2017: UV, X-Ray, and Gamma-Ray Space Instrumentation for Astronomy, San Diego, USA, 06–10 August 2017; Volume 1039718.
87. Fabiani, S.; Bellazzini, R.; Berrilli, F.; Brez, A.; Costa, E.; Minuti, M.; Muleri, F.; Pinchera, M.; Rubini, A.; Soffitta, P.; et al. Performance of an Ar-DME imaging photoelectric polarimeter. In Proceedings of the Society of Photo-Optical Instrumentation Engineers (SPIE) Conference, Amsterdam, Netherland, 1–6 July 2012; Volume 8443.
88. Tagliaferri, G.; Hornstrup, A.; Huovelin, J.; Reglero, V.; Romaine, S.; Rozanska, A.; Santangelo, A.; Stewart, G. The NHXM observatory. *Exp. Astron.* **2011**, *34*, 463–488.
89. Berrilli, F.; Soffitta, P.; Velli, M.; Sabatini, P.; Bigazzi, A.; Bellazzini, R.; Bellot Rubio, L.R.; Brez, A.; Carbone, V.; Cauzzi, G.; et al. ADAHELI: Exploring the fast, dynamic Sun in the x-ray, optical, and near-infrared. *J. Astron. Telesc. Instrum. Syst.* **2015**, *1*, doi:10.1117/1.JATIS.
90. Fabiani, S.; Bellazzini, R.; Berrilli, F.; Brez, A.; Costa, E.; Muleri, F.; Pinchera, M.; Rubini, A.; Soffitta, P.; Spandre, G. A solar flares X-ray polarimeter. *Mem. Soc. Astron. Ital.* **2013**, *84*, 422.
91. Heitler, W. *Quantum Theory of Radiation*, 3rd ed.; International Series of Monographs on Physics; Clarendon Press: Oxford, UK, 1954.
92. Hubbell, J.H.; Veigele, W.J.; Briggs, E.A.; Brown, R.T.; Cromer, D.T.; Howerton, R.J. Atomic form factors, incoherent scattering functions, and photon scattering cross sections. *J. Phys. Chem. Ref. Data* **1975**, *4*, 471–538.
93. Paul, B.; Rishin, P.V.; Maitra, C.; Gopalakrishna, M.R.; Duraichelvan, R.; Ateequlla, C.M.; Cowsik, R.; Devasia, J.; Marykutty, J. Thomson X-ray Polarimeter for a Small Satellite Mission. In Proceedings of the 29th Meeting of the Astronomical Society of India, Raipur, India, 23–25 February 2011.
94. Paul, B.; Gopala Krishna, M.R.; Puthiya Veetil, R. POLIX: A Thomson X-ray polarimeter for a small satellite mission. In Proceedings of the 41st COSPAR Scientific Assembly, Istanbul, Turkey, 30 July–7 August 2016; Volume 41.
95. Zhitnik, I.A.; Logachev, Y.I.; Bogomolov, A.V.; Denisov, Y.I.; Kavanosyan, S.S.; Kuznetsov, S.N.; Morozov, O.V.; Myagkova, I.N.; Svertilov, S.I.; Ignat'ev, A.P.; et al. Polarization, temporal, and spectral parameters of solar flare hard X-rays as measured by the SPR-N instrument onboard the CORONAS-F satellite. *Sol. Syst. Res.* **2006**, *40*, 93–103.
96. Zhitnik, I.A.; Logachev, Y.I.; Bogomolov, A.V.; Bogomolov, V.V.; Denisov, Y.I.; Kavanosyan, S.S.; Kuznetsov, S.N.; Morozov, O.V.; Myagkova, I.N.; Svertilov, S.I.; et al. Experiment with the SPR-N Instrument Onboard the CORONAS-F Satellite: Polarization, Temporal, and Spectral Characteristics of the Hard X-Ray of the Solar Flares. In *Astrophysics and Space Science Library*; Kuznetsov, V., Ed.; Astrophysics and Space Science Library, Springer-Verlag Berlin Heidelberg: 2014; Volume 400, p. 129.
97. Xiao, H.; Hajdas, W.; Marcinkowski, R.; POLAR collaboration. Optimization of the final settings for the Space-borne Hard X-ray Compton Polarimeter POLAR. *arXiv* **2017**, arXiv:physics.ins-det/1707.02291.
98. Xiao, H.; Hajdas, W.; Wu, B.; Produit, N.; Sun, J.; Kole, M.; Bao, T.; Bernasconi, T.; Batsch, T.; Cadoux, F.; et al. In-flight energy calibration of the space-borne Compton polarimeter POLAR. *arXiv* **2017**, arXiv:physics.ins-det/1710.08918.
99. Kole, M. GRB polarisation measurements of POLAR. In Proceedings of the Alsatian Workshop of X-ray Polarimetry, Strasburg, France, 13–15 November 2017, in Preparation on Galaxies (ISSN 2075-4434).
100. Chauvin, M.; Jackson, M.; Kawano, T.; Kiss, M.; Kole, M.; Mikhalev, V.; Moretti, E.; Takahashi, H.; Pearce, M. Optimising a balloon-borne polarimeter in the hard X-ray domain: From the PoGOLite Pathfinder to PoGO+. *Astropart. Phys.* **2016**, *82*, 99–107.

101. Chauvin, M.; Florén, H.G.; Friis, M.; Jackson, M.; Kamae, T.; Kataoka, J.; Kawano, T.; Kiss, M.; Mikhalev, V.; Mizuno, T.; et al. Shedding new light on the Crab with polarized X-rays. *Sci. Rep.* **2017**, *7*, 7816, doi:10.1038/s41598-017-07390-7.
102. Friis, M. PoGO+ observations of Cygnus X-1 in the low/hard state. In Proceedings of the Alsatian Workshop of X-Ray Polarimetry, Strasburg, France, 13-15 November 2017, in Preparation on Galaxies (ISSN 2075-4434).
103. Mikhalev, V. PoGO+ measurement of Crab emissions in the hard X-ray band. In Proceedings of the Alsatian Workshop of X-Ray Polarimetry, Strasburg, France, 13-15 November 2017, in Preparation on Galaxies (ISSN 2075-4434).
104. Vadawale, S.V.; Chattopadhyay, T.; Mithun, N.P.S.; Rao, A.R.; Bhattacharya, D.; Vibhute, A.; Bhalerao, V.B.; Dewangan, G.C.; Misra, R.; Paul, B.; et al. Phase-resolved X-ray polarimetry of the Crab pulsar with the AstroSat CZT Imager. *Nat. Astron.* **2018**, *2*, 50–55.
105. Vadawale, S.V.; Chattopadhyay, T.; Rao, A.R.; Bhattacharya, D.; Bhalerao, V.B.; Vagshette, N.; Pawar, P.; Sreekumar, S. Hard X-ray polarimetry with Astrosat-CZTI. *Astron. Astrophys.* **2015**, *578*, A73.
106. Kislat, F.; Beheshtipour, B.; Dowkontt, P.; Guarino, V.; Lanzi, R.J.; Okajima, T.; Braun, D.; Cannon, S.; de Geronimo, G.; Heatwole, S.; et al. Design of the Telescope Truss and Gondola for the Balloon-Borne X-ray Polarimeter X-Calibur. *J. Astron. Instrum.* **2017**, *6*, 1740003, doi:10.1142/S2251171717400037.
107. Endsley, R.; Beilicke, M.; Kislat, F.; Krawczynski, H.; X-Calibur/InFOCuS. Systematic and Performance Tests of the Hard X-ray Polarimeter X-Calibur. In Proceedings of the American Astronomical Society Meeting Abstracts, Seattle, Washington, USA, 4-8 January 2015; Volume 225.
108. Beilicke, M.; Kislat, F.; Zajczyk, A.; Guo, Q.; Endsley, R.; Stork, M.; Cowsik, R.; Dowkontt, P.; Barthelmy, S.; Hams, T.; et al. Design and Performance of the X-ray Polarimeter X-Calibur. *J. Astron. Instrum.* **2014**, *3*, 1440008.
109. Beilicke, M.; Kislat, F.; Zajczyk, Q.; Guo, Q.; Endsley, R.; Cowsik, R.; Dowkontt, P.; Krawczynski, H. First flight of the X-ray Polarimeter X-Calibur. In Proceedings of the 2015 IEEE Aerospace Conference, Big Sky, MT, USA, 7–14 March 2015.
110. Guo, Q.; Beilicke, M.; Garson, A.; Kislat, F.; Fleming, D.; Krawczynski, H. Optimization of the design of the hard X-ray polarimeter X-Calibur. *Astropart. Phys.* **2013**, *41*, 63–72.
111. Hayashida, K.; Kim, J.; Sadamoto, M.; Yoshinaga, K.; Gunji, S.; Mihara, T.; Kishimoto, Y.; Kubo, H.; Mizuno, T.; Takahashi, H.; et al. Hard x-ray imaging polarimeter for Polaris. In Proceedings of the Space Telescopes and Instrumentation 2016: Ultraviolet to Gamma Ray, Edinburgh, UK, 26 June–1 June 2016; Volume 9905, p. 99051A.
112. McConnell, M.L.; Bloser, P.F.; Ertley, C.; Legere, J.; Ryan, J.M.; Wasti, S.K. Current status of the GRAPE balloon program. In Proceedings of the Space Telescopes and Instrumentation 2014: Ultraviolet to Gamma Ray, Montreal, QC, Canada, 22–26 June 2014; Volume 9144, p. 91443P.
113. McConnell, M.L.; Bloser, P.F.; Connor, T.P.; Ertley, C.; Legere, J.; Ryan, J.M.; Wasti, S.K. Plans for the next GRAPE balloon flight. In *UV, X-Ray, and Gamma-Ray Space Instrumentation for Astronomy XVIII*; SPIE: Bellingham, WA, USA, 2013; Volume 8859, p. 885909.
114. Connor, T.P.; Bancroft, C.M.; Bloser, P.F.; Legere, J.S.; McConnell, M.L.; Ryan, J.M. Plans for the first balloon flight of the gamma-ray polarimeter experiment (GRAPE). In Proceedings of the Space Telescopes and Instrumentation 2010: Ultraviolet to Gamma Ray, San Diego, USA, 27 June - 2 July 2010; Volume 7732, p. 77324E.
115. Bloser, P.F.; McConnell, M. L.; Legere, J. S.; Connor T. P.; Ryan, J. M. The Gamma-RAY Polarimeter Experiment (GRAPE) balloon payload. In *X-Ray Polarimetry: A New Window in Astrophysics by Ronaldo Bellazzini, Enrico Costa, Giorgio Matt and Gianpiero Tagliaferri*; Bellazzini, R., Costa, E., Matt, G., Tagliaferri, G., Eds.; Cambridge University Press: Cambridge, MA, USA, 2010; p. 314.
116. Bloser, P.F.; Legere, J.S.; McConnell, M.L.; Macri, J.R.; Bancroft, C.M.; Connor, T.P.; Ryan, J.M. Calibration of the Gamma-RAY Polarimeter Experiment (GRAPE) at a polarized hard X-ray beam. *Nucl. Instrum. Methods Phys. Res. A* **2009**, *600*, 424–433.
117. Kishimoto, Y.; Gunji, S.; Ishigaki, Y.; Kanno, M.; Murayama, H.; Ito, C.; Tokanai, F.; Suzuki, K.; Sakurai, H.; Mihara, T.; et al. Basic Performance of PHENEX: A Polarimeter for High ENERgy X rays. *IEEE Trans. Nucl. Sci.* **2007**, *54*, 561–566.

118. Gunji, S.; Kishimoto, Y.; Sakurai, H.; Tokanai, F.; Kanno, M.; Ishikawa, Y.; Hayashida, K.; Anabuke, N.; Tsunemi, H.; Mihara, T.; et al. The PHENEX experiment result. In Proceedings of the Polarimetry Days in Rome: Crab Status, Theory and Prospects, Rome, Italy, 16–17 October 2008.
119. Gunji, S.; Sakurai, H.; Tokanai, F.; Kishimoto, Y.; Kanno, M.; Ishikawa, Y.; Hayashida, K.; Anabuki, N.; Tsunemi, H.; Mihara, T.; et al. Observation of Crab Nebula with hard x-ray polarimeter: PHENEX. In Proceedings of the UV, X-Ray, and Gamma-Ray Space Instrumentation for Astronomy XV, San Diego, CA, USA, 26–27 August 2007; Volume 6686, p. 668618.
120. Kishimoto, Y.; Gunji, S.; Ishikawa, Y.; Takada, M.; Toukairin, N.; Tanaka, Y.; Tokanai, F.; Sakurai, H.; Mihara, T.; Sato, T.; et al. Observation of Polarization in Hard X-Ray Region with PHENEX Polarimeter. In Proceedings of the RIKEN Symposium, RIKEN, and JAXA Suzuki Umetaro Hall, RIKEN Wako, Saitama, Japan, 10–12 June 2008.
121. Yonetoku, D.; Murakami, T.; Gunji, S.; Mihara, T.; Sakashita, T.; Morihara, Y.; Kikuchi, Y.; Takahashi, T.; Fujimoto, H.; Toukairin, N.; et al. Gamma-Ray Burst Polarimeter (GAP) aboard the Small Solar Power Sail Demonstrator IKAROS. *Publ. Astron. Soc. Jpn.* **2011**, *63*, 625–638.
122. Yonetoku, D.; Murakami, T.; Gunji, S.; Mihara, T.; Toma, K.; Sakashita, T.; Morihara, Y.; Takahashi, T.; Toukairin, N.; Fujimoto, H.; et al. Detection of Gamma-Ray Polarization in Prompt Emission of GRB 100826A. *Astrophys. J. Lett.* **2011**, *743*, 217–234.
123. Yonetoku, D.; Murakami, T.; Gunji, S.; Mihara, T.; Toma, K.; Morihara, Y.; Takahashi, T.; Wakashima, Y.; Yonemochi, H.; Sakashita, T.; et al. Magnetic Structures in Gamma-Ray Burst Jets Probed by Gamma-Ray Polarization. *Astrophys. J.* **2012**, *758*, doi:10.1088/2041-8205/758/1/L1.
124. Yonetoku, D.; Murakami, T.; Fujimoto, H.; Sakashita, T.; Gunji, S.; Toukairin, N.; Tanaka, Y.; Mihara, T.; Kubo, S.; and GAP Team GAP aboard the solar-powered sail mission. In *X-Ray Polarimetry: A New Window in Astrophysics* by Ronaldo Bellazzini, Enrico Costa, Giorgio Matt and Gianpiero Tagliaferri; Bellazzini, R., Costa, E., Matt, G., Tagliaferri, G., Eds.; Cambridge University Press: Cambridge, MA, USA, 2010; p. 339.
125. Xie, F. SPHiNX: Compton scattering polarimeter for GRBs. In Proceedings of the Alsatian Workshop of X-ray Polarimetry, Strasburg, France, 13–15 November 2017, in Preparation on Galaxies (ISSN 2075-4434).
126. Dergachev, V.A.; Matveev, G.A.; Kruglov, E.M.; Lazutkov, V.P.; Savchenko, M.I.; Skorodumov, D.V.; Pyatigorsky, G.A.; Chichikaluk, Y.A.; Shishov, I.I.; Khmylko, V.V.; et al. Hard X-ray Compton polarimetry with the PENGUIN-M instrument in the spaceborne experiment CORONAS-PHOTON. *Bull. Russ. Acad. Sci. Phys.* **2009**, *73*, 419–421.
127. Kotov, Y.D.; Yurov, V.N.; Glyanenko, A.S.; Lupar, E.E.; Kochemasov, A.V.; Trofimov, Y.A.; Zakharov, M.S.; Faradzhaev, R.M.; Tyshkevich, V.G.; Rubtsov, I.V.; et al. Solar X-ray polarimetry and spectrometry instrument PING-M for the Interhelioprobe mission. *Adv. Space Res.* **2016**, *58*, 635–643.
128. Suarez-Garcia, E.; Hajdas, W.; Wigger, C.; Arzner, K.; Güdel, M.; Zehnder, A.; Grigis, P. X-Ray Polarization of Solar Flares Measured with RHESSI. *Sol. Phys.* **2006**, *239*, 149–172.
129. Chauvin, M.; Florén, H.G.; Jackson, M.; Kamae, T.; Kawano, T.; Kiss, M.; Kole, M.; Mikhalev, V.; Moretti, E.; Olofsson, G.; et al. The design and flight performance of the PoGOLite Pathfinder balloon-borne hard X-ray polarimeter. *Exp. Astron.* **2016**, *41*, 17–41.
130. Chauvin, M.; Florén, H.G.; Friis, M.; Jackson, M.; Kamae, T.; Kataoka, J.; Kawano, T.; Kiss, M.; Mikhalev, V.; Mizuno, T.; et al. The PoGO+ view on Crab off-pulse hard X-ray polarisation. *Mon. Not. R. Astron. Soc.* **2018**, *477*, L45–L49.
131. McConnell, M.L.; Bloser, P.F.; Legere, J.S.; Ryan, J.M. The development of a low energy Compton imager for GRB polarization studies. In Proceedings of the Space Telescopes and Instrumentation 2016: Ultraviolet to Gamma Ray, Edinburgh, UK, 26 June–1 June 2016; Volume 9905, p. 99052O.
132. Moita, M. Hard X-ray and soft gamma ray polarimetry with CdTe/CZT spectroimager. In Proceedings of the Alsatian Workshop of X-ray Polarimetry, Strasburg, France, 13–15 November 2017, in Preparation on Galaxies (ISSN 2075-4434).

